



# Teaching and Learning

## 01 Literacy Framework

Reading instruction (interactive reading, shared reading, guided reading, independent reading). phonics, spelling and word work, and writing instruction.



## Health and Wellness

06

Well-being for students and staff is a priority and is fostered by building positive relationships with students, staff, and parents..



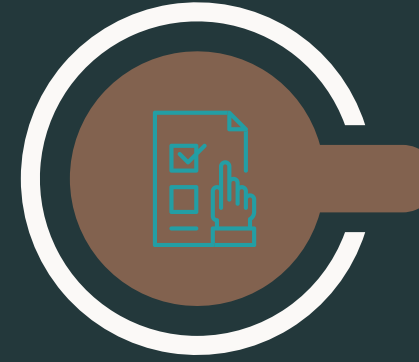
## 02 Numeracy Framework

Math Up, Fact Fluency, reasoning, and problem solving



## School Wide Assessment 07

Utilization of a variety of assessments. For example: Fountas & Pinnell Assessment System and Math interventions



## 03 Science Inquiry Framework

Students immerse in their inquiry, investigate areas of interest and questioning.



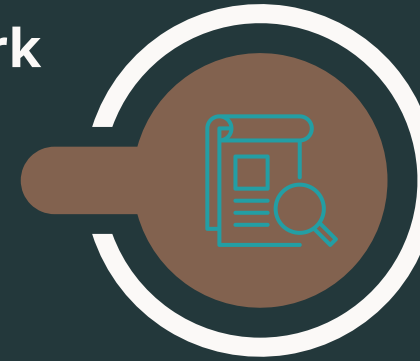
## Home Literacy Program 08

It is important that school and home create a positive and caring relationships. This allows school and home to provide students with cohesive learning environment.



## 04 Social Inquiry Framework

Students immerse in their inquiry, investigate areas of interest and questioning.



## Spanish Bilingual Program 09

The Spanish Bilingual Program provides students with the opportunity to acquire the basic skills for speaking, reading, writing, listening and communicating in both English and Spanish at a young age.



## 05 Fine Arts (Art, Music, Drama)

Encouraging creativity, communication, cultural awareness, aa relationship to our environment.



## Continuous Improvement 10

Analyze trends and patterns in provincial assessments as well as trends within the school . Identify recurring issues or areas for process improvement.





# Literacy Framework

## F&P Classroom

Guided reading, read aloud, big books, spelling, phonics, and word study



## F&P Assessments

All grade levels will have access to F&P assessment material .



## SearchEngage

Phonics, Morphology, word inquiry



## Inservice

August 2025  
Day 1 Literacy - F& P Classroom  
Day 2 Search Engage



## School Resources

LLI - Orange -Green - Blue  
Fly leaf series 1-2-3  
Rhyme Magic  
Scholastic - non fiction /fiction

## Decodables

Kindergarten - Grade 3 will have access to decodable books for literacy instruction.



## Digital Decodables

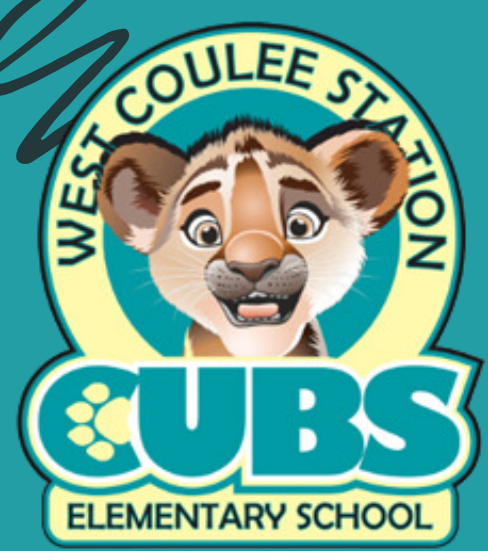
All staff will have access to Digital decodable material.





November 1  
2024





# Spanish Learning Framework

- In elementary, a 50/50 split in instructional time between English and Spanish allows students to build fluency in both languages. Children learn to understand and respond appropriately in Spanish in a range of everyday situations.

## From kindergarten to grade 5:

- Spanish Language Arts and Math are taught in Spanish
- English Language Arts is taught in English
- Other subjects are taught in English or Spanish or bilingually as determined by schools

Math up  
and  
F&P classroom- Spanish  
phonics



Building Fact  
Fluency



Manipulatives



F&P Assessments

All grade levels will have access to F&P assessment material .



Inservice

August 2025  
Day 3 Math Up



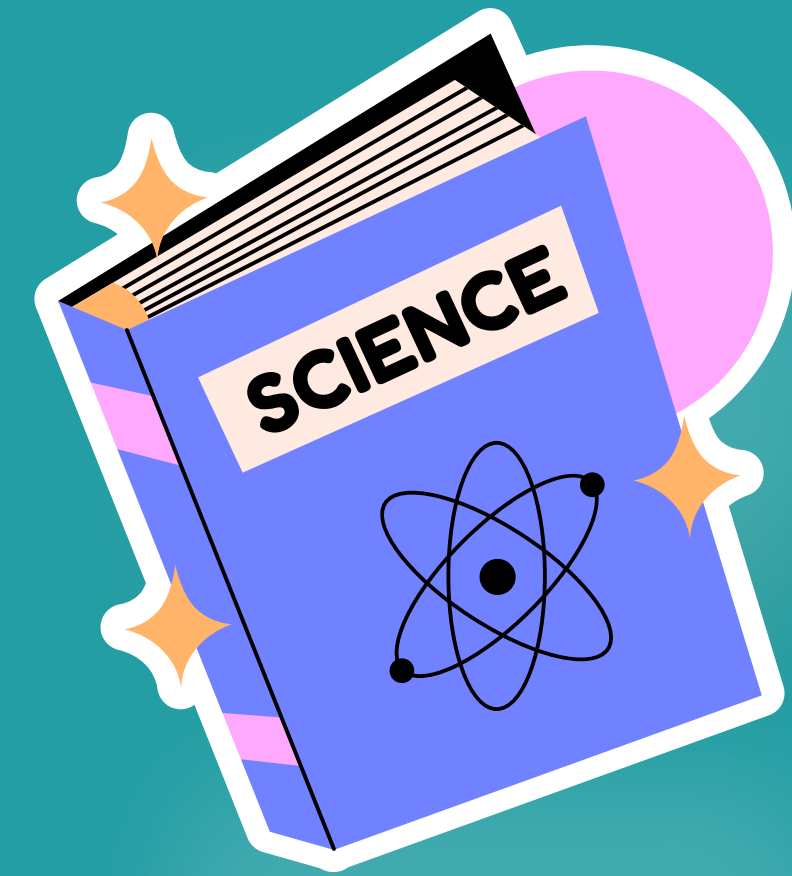
Decodables

All staff will have access to  
Both books and digital  
decodable material.





# Science Inquiry Framework



Science is the study of many interconnected disciplines, including physics, chemistry, biology, Earth science, astronomy, and computer science. Science is creative, collaborative, and dynamic; is based on experience and evidence; and employs objective methods for observing, collecting, and analyzing data. Scientific knowledge is developed, refined, and extended as new evidence is uncovered. The study of science allows students to nurture curiosity, ask and answer questions, explore scientific and technological concepts, and acquire knowledge and understanding of the world.



# Social Inquiry Framework



Social studies is the study of history, geography, economics, civics and citizenship, and government and politics. Students explore important questions and actively engage with issues to understand lessons from the past and to become active and well-informed citizens in their communities. Students use a knowledge-based curriculum and combine social science methods, including research, source evaluation, and evidence interpretation, to enhance understanding, draw conclusions and build robust critical-thinking skills.



# FINE ARTS (ART, MUSIC, DRAMA, CHOIR/HANBELLS )



Art



Music



Drama



Choir/Handbells



# HEALTH AND WELLNESS



Gym



Recess



Makerspace



Lunch

## Extra Curricular Events

- November - Volleyball February - Basketball
- Family Nights
- and more to be announced later

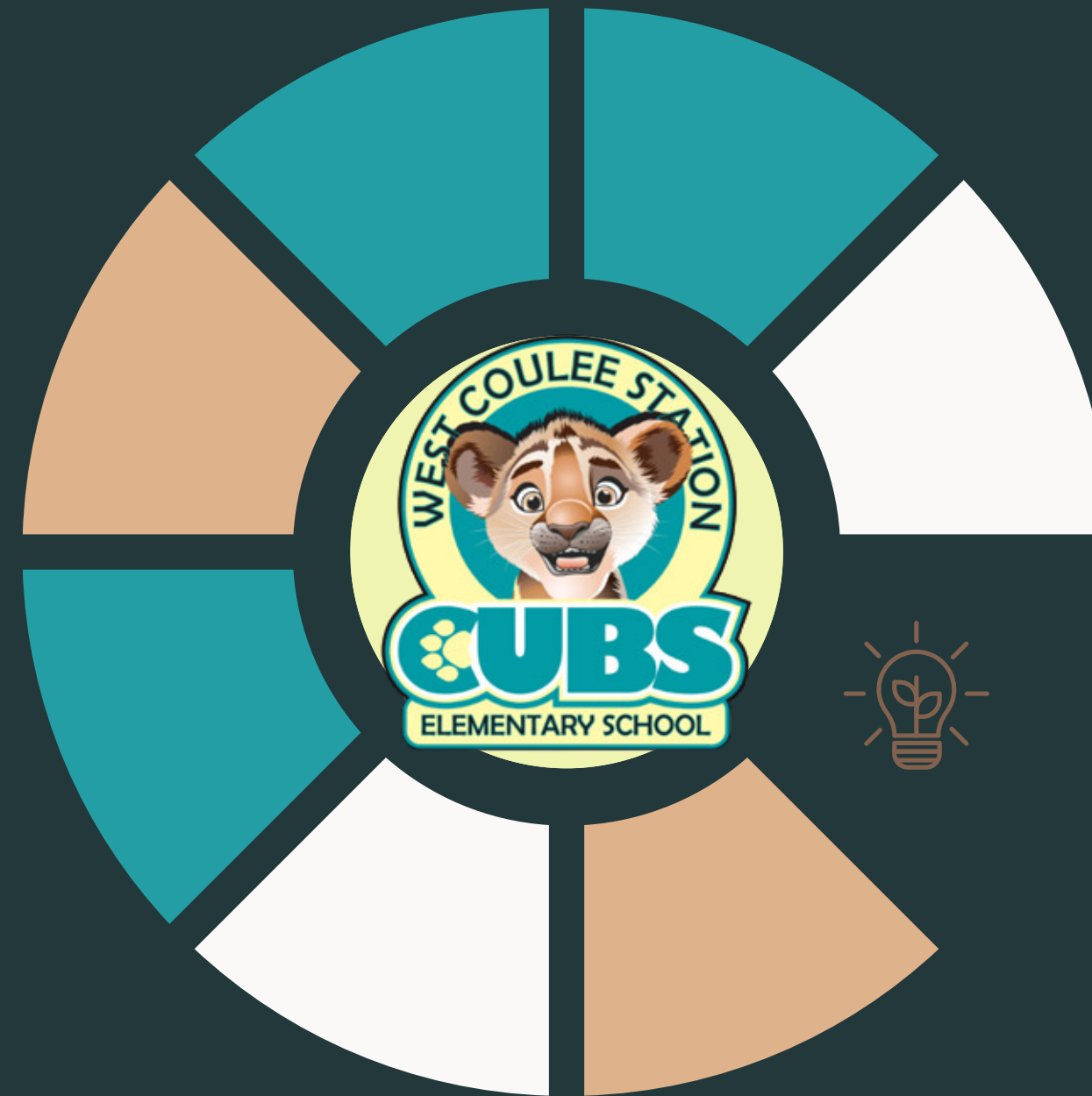




# SCHOOL/GOVERNMENT ASSESSMENTS

F&P Assessments

RAN



LENS

PAST

CC3





# HOME READING PROGRAM



## Literacy Pro Library

This is a at home reading program that allows school and home literacy collaboration



## Teacher Access

Teachers have the ability to assign books as they see fit for each student. They can also hear students who are reading fi the student sends them a read aloud.



## Student Access

Students and their families have the opportunity to utilize the read-aloud feature, as well as record their reading activities and submit them to their teachers. Additionally, there are various rewards available that can be earned through consistent reading engagement.



## Books

There are over 3000 book titles that can be read and students can record their reading and send it their teachers.

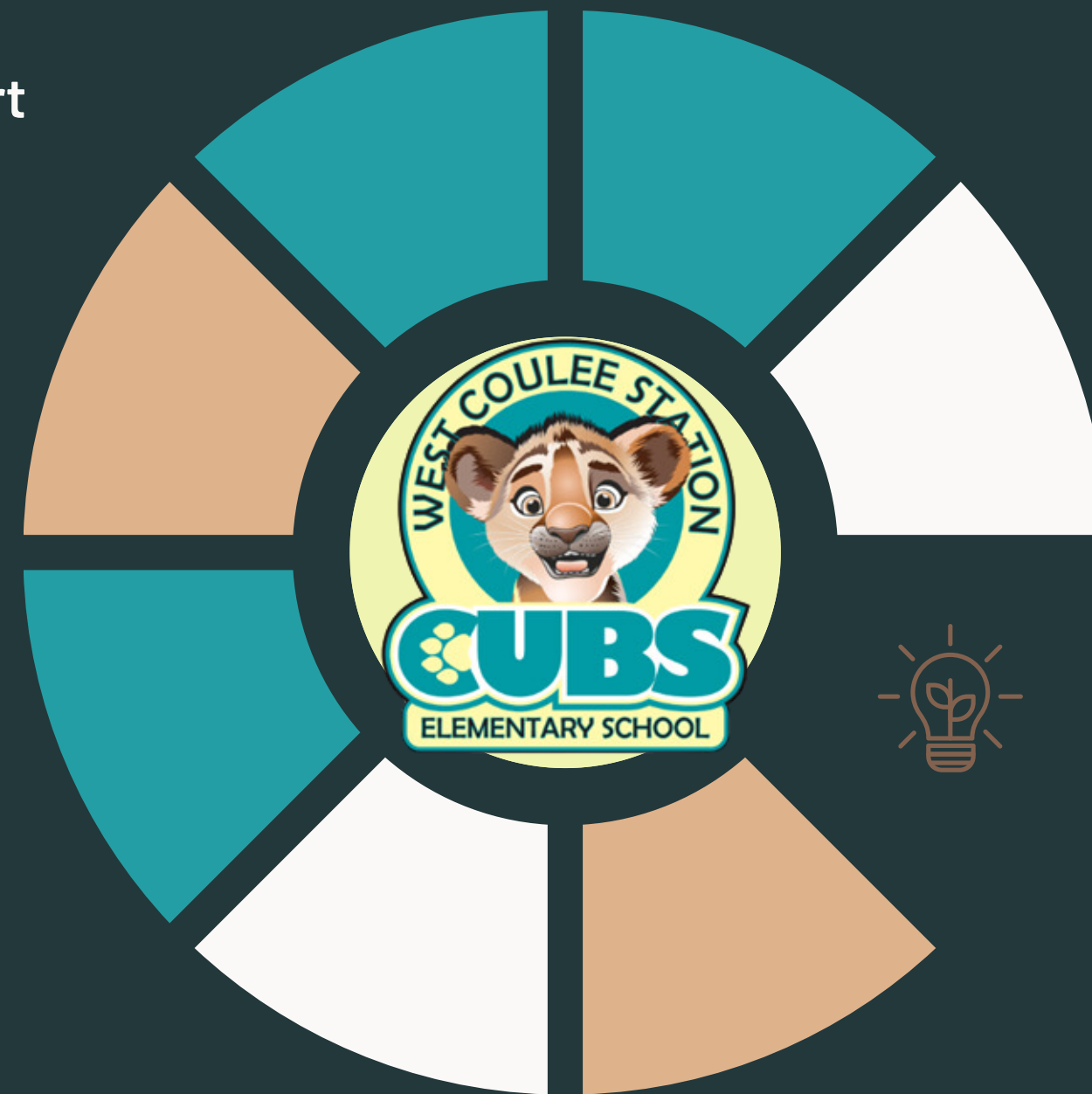


# CONTINUOUS IMPROVEMENT

THROUGHOUT THE YEAR WE NEED TO PROVIDE ALBERTA EDUCATION AND OUR FAMILIES REPORTS THESE ARE LISTED BELOW AND WILL SHOW OUR CONTINUOUS IMPROVEMENT.

Annual Education Results Report

Assurance Plan



Government Assessments

Parent Teacher Interviews

